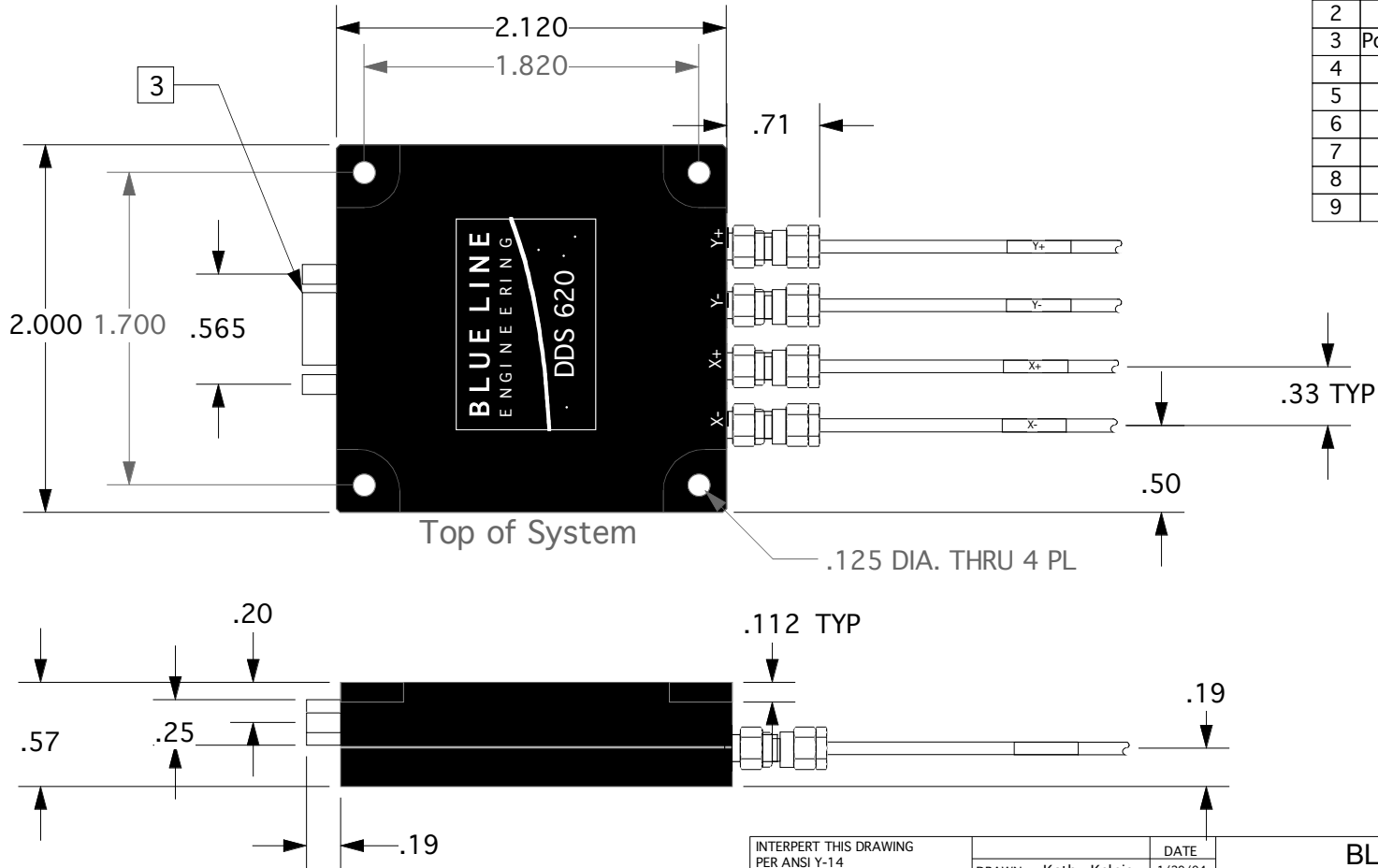


Notes:

1. Enclosure material: 6061-T6 Aluminum.
2. Enclosure powdercoat painted black with white silkscreen.
3. Mating connector Min-E-Con P/N MR-9SCBRPT-100.

REVISIONS			
REV	DESCRIPTION	DATE	APPROVED
A	Initial Release	2/13/04	GA
B	ECO# 1229	6/9/04	PNZ
C	ECO# 1576	10/7/08	PNZ

3 Pin Assignments	
1	+15V Supply
2	-15V Supply
3	Pow. Supp. Ground
4	+X Output
5	-X Output
6	+Y Output
7	-Y Output
8	Not Used
9	Not Used



INTERPERT THIS DRAWING PER ANSI Y-14 UNLESS OTHERWISE SPECIFIED : DIMENSIONS ARE IN INCHES TOLERANCE .XX = +/- .02 .XXX = +/- .005 ANGLES = +/- 1/2 DEG SURFACE ROUGHNESS 63 / MAX DO NOT SCALE THIS DRAWING MATERIAL :	DRAWN	Kathy Kelpin	DATE	1/29/04
	ENGRG	Greg Ames		2/13/04
	PROD	Tom Studer		2/13/04
	PROJECT			
	QA	Kathy Kelpin		2/13/04

BLUE LINE ENGINEERING			
DDS Electronics Enclosure			
SIZE	CAGE CODE	DWG. NO.	REV.
A	1JUH2	100032	C
SCALE:		SHT. 1 OF 1	